

# meviy new releases



**meviy**



**MiSUMi**

Your Time,  
Our Priority

# Overview: New Releases of meviy



## CNC Milling

- ✓ [Express and Rapid Shipping Options](#)
- ✓ [Red and Gold Anodised](#)
- ✓ [New Metal Materials & Surface Treatment](#)
- ✓ [Surface Roughness Ra3.2/Rz12.5](#)
- ✓ [New Plastic Materials](#)
- ✓ [Threaded Inserts for Plastic Parts](#)
- ✓ [Inch Tapped Holes](#)
- ✓ [Automatic Quotation on Curved Surfaces](#)
- ✓ [Automatic Quotation for Small Diameter Holes](#)



## CNC Turning

- ✓ [Geometric Dimensioning & Tolerancing](#)
- ✓ [Plastic Materials Added](#)
- ✓ [Heat Treatment Options](#)
- ✓ [Custom Hexagon Bars](#)
- ✓ [Hexagon Hole](#)
- ✓ [Recognition of Crown & Taper Shapes](#)
- ✓ [Plastic Washer](#)
- ✓ [Inch Threads](#)

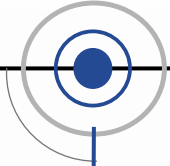


## Sheet Metal

- ✓ [Additional Edge Breaking Options](#)
- ✓ [Pre Anodised Plate](#)
- ✓ [5 New Wet Paint Colours](#)
- ✓ [Long-Time Delivery Option](#)
- ✓ [Tap and Countersunk Visibility](#)
- ✓ [Aluminium Composite Plate Option](#)



# Overview: New Releases of meviy



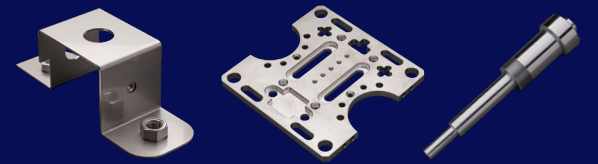
System

- ✓ [Engraving for Part Number](#)
- ✓ [Part Number History Function](#)
- ✓ [New Supported CAD File Format](#)
- ✓ [Download 2D PDF Drawing](#)



# ■ CNC Milling

---

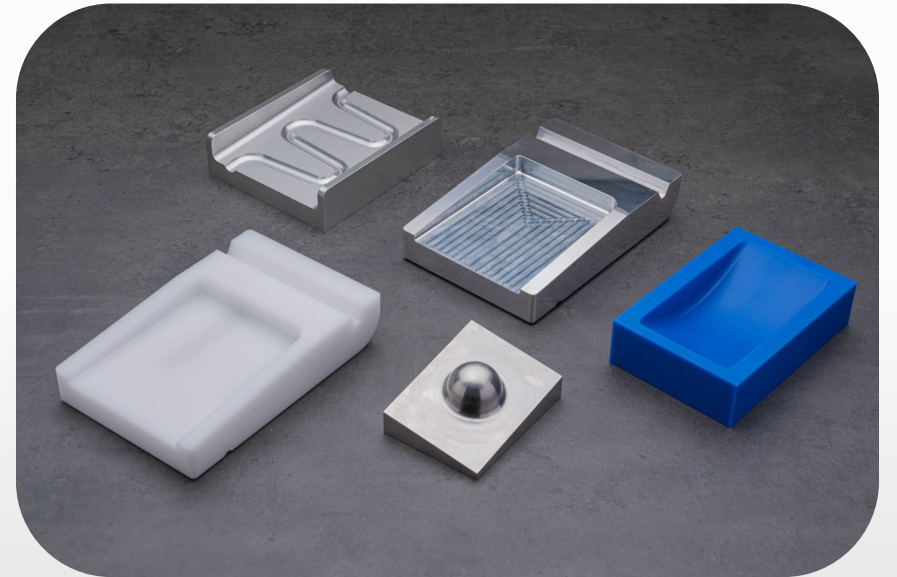
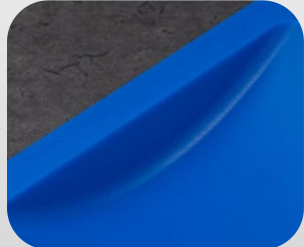
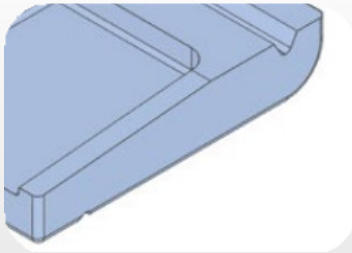


# CNC Milling: Automatic Quotations On Complex Curved Surface Shapes 1/2

With the latest update, you now have the ability to make more precise machining decisions using **flat, ball, and radius end mills**. This expanded capability allows for **automatic quotations on complex curved surface shapes** that were previously difficult to estimate. Please note that this process will take **approx. 12 minutes per part**.

As a result, engineers can now enjoy enhanced flexibility in their designs, improving user convenience and streamlining the manufacturing process.

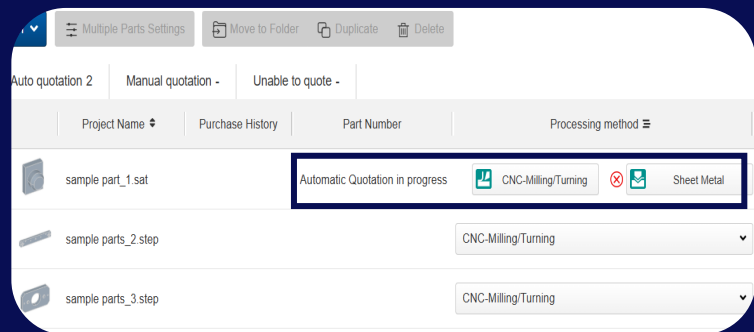
## Shape Examples



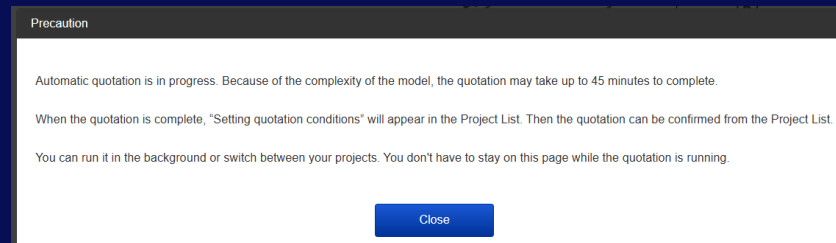
## CNC Milling: Automatic Quotations On Complex Curved Surface Shapes 2/2

Please note the following when uploading a part with complex curved surface shapes.

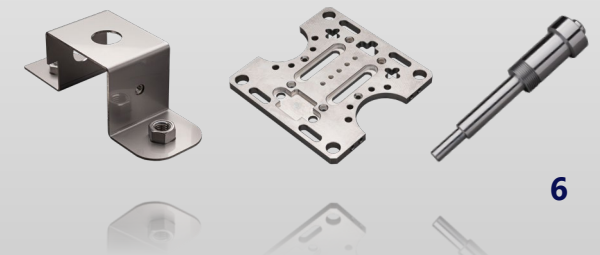
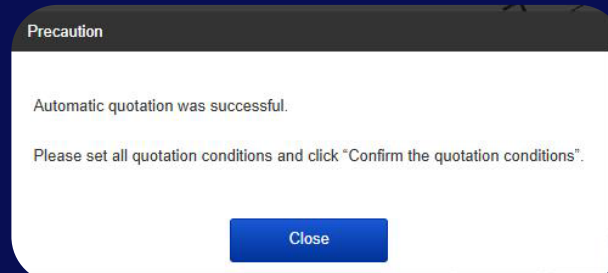
**The parts are indicated in the blue frame above.**



**If there is a delay in your quotation, following message will appear. You can switch screens while the quotation is being calculated.**



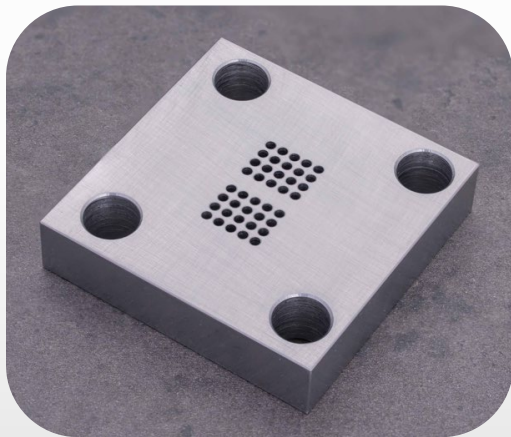
**Once the automatic quotation is generated, click "Confirm Quotation Conditions" to view the price and delivery date.**



# CNC Milling: Automated Quotation for Small Diameter Holes

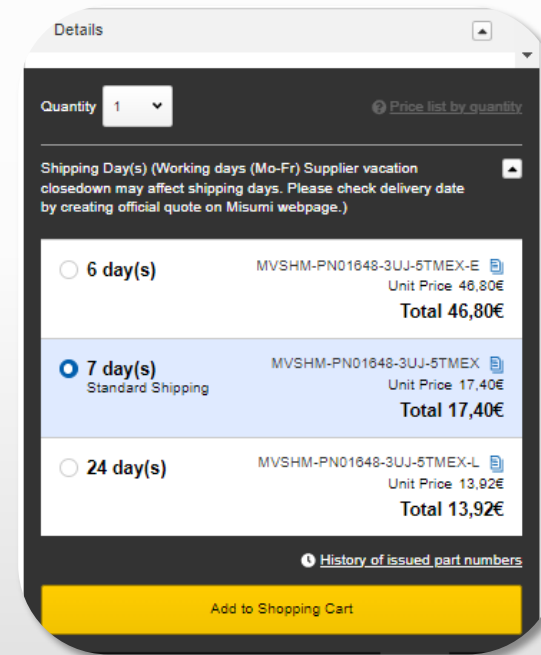
Automatic quotations for diameter holes with a range of less than  $\varnothing 2$  were not previously possible. Thanks to our new update, you can now also receive **automatic quotations** for small **diameter holes** with a **range of  $\varnothing 1 \sim \varnothing 2$** !

## Example:

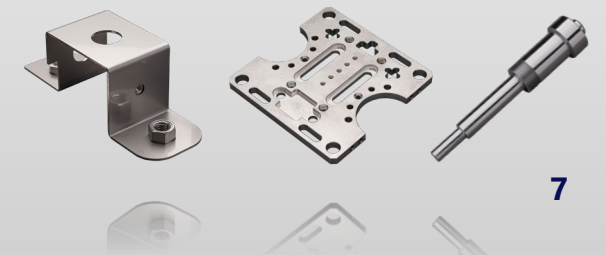


part with a  $\varnothing 1,5$  diameter hole manufactured by meviy

Automated Quotation Available



Shipping Day(s)	Part Number	Unit Price	Total
<input type="radio"/> 6 day(s)	MVSHM-PN01648-3UJ-5TMEX-E	46,80€	Total 46,80€
<input checked="" type="radio"/> 7 day(s) Standard Shipping	MVSHM-PN01648-3UJ-5TMEX	17,40€	Total 17,40€
<input type="radio"/> 24 day(s)	MVSHM-PN01648-3UJ-5TMEX-L	13,92€	Total 13,92€





# CNC Milling: Express and Rapid Shipping Option

We're excited to introduce two new shipping options, Rapid and Express Shipment, through our on-demand service. Designed to reduce lead times and accommodate urgent design changes, these options ensure faster delivery for your CNC milled parts.

Quantity 1
[Price list by quantity](#)

Shipping Day(s) (Working days (Mo-Fr) Supplier vacation closedown may affect shipping days. Please check delivery date by creating official quote on Misumi webpage.)

☐ 7 day(s)

MVBLK-SSN-43C-L9YRX-R
Unit Price 24,31€
**Total 24,31€**

☐ 9 day(s)

MVBLK-SSN-43C-L9YRX-E
Unit Price 19,89€
**Total 19,89€**

☒ 11 day(s)  
Standard Shipping

MVBLK-SSN-43C-L9YRX
Unit Price 11,05€
**Total 11,05€**

☐ 25 day(s)

MVBLK-SSN-43C-L9YRX-L
Unit Price 9,39€
**Total 9,39€**

Add to Shopping Cart

Shipping Option	Material	Surface Treatment
Rapid Shipping	EN 1.0038 equiv. EN 1.1206 equiv. EN AW 2017 equiv. EN AW 5052 equiv. EN AW 7075 equiv.	Black Oxide Electroless Nickel Plating
Express Shipping	Steel Stainless Steel Aluminium Plastic	Black Oxide Electroless Nickel Plating Hard Chrome Plating Trivalent Chromate (Clear) Anodise (Clear, Black) Anodise Black (matt)

Find out more about meviy's new shipping options and other exciting topics in our blog!

[LEARN MORE](#)



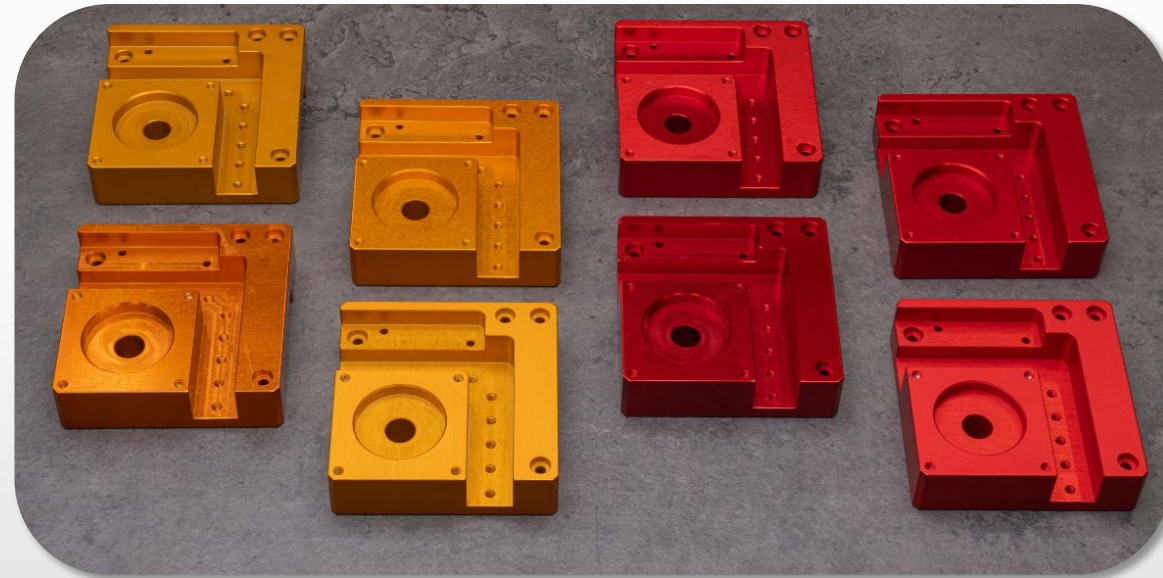


## CNC Milling: Automatic Quotation for Red and Gold Anodising Available

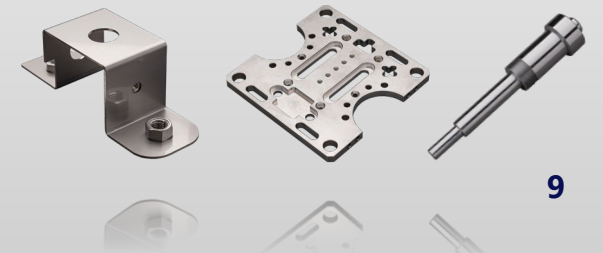
Our new red and gold anodising options for CNC milled parts are now available as an automatic quotation! These vibrant colors offer enhanced aesthetics while maintaining aluminum's durability, perfect for industries like electronics, automotive, and consumer goods.

Find out more about this new release and many other exciting topics on our blog!

[LEARN MORE](#)



*Red and Gold Anodised Milled Parts Manufactured by meviy*



# CNC Milling: New Material and Surface Treatment Options Available

We've introduced **new material** and **surface treatment** options for **milled parts**! These additions provide greater flexibility and enhanced durability, ensuring your parts meet both functional and aesthetic requirements. Explore the new options and take your projects to the next level!

## Material

EN 1.4305 equiv. (annealed material)  
EN 1.4301 equiv. (annealed material)  
EN 1.7220 equiv. (26 to 32 HRC)

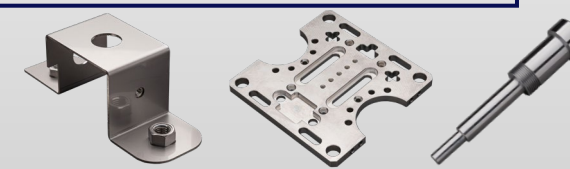
## Surface Treatment

Hard Anodise (Clear)  
LTBC- Surface Treatment  
Phosphating (Manganese)

Discover a detailed overview of all available materials and surface treatments for milled parts.

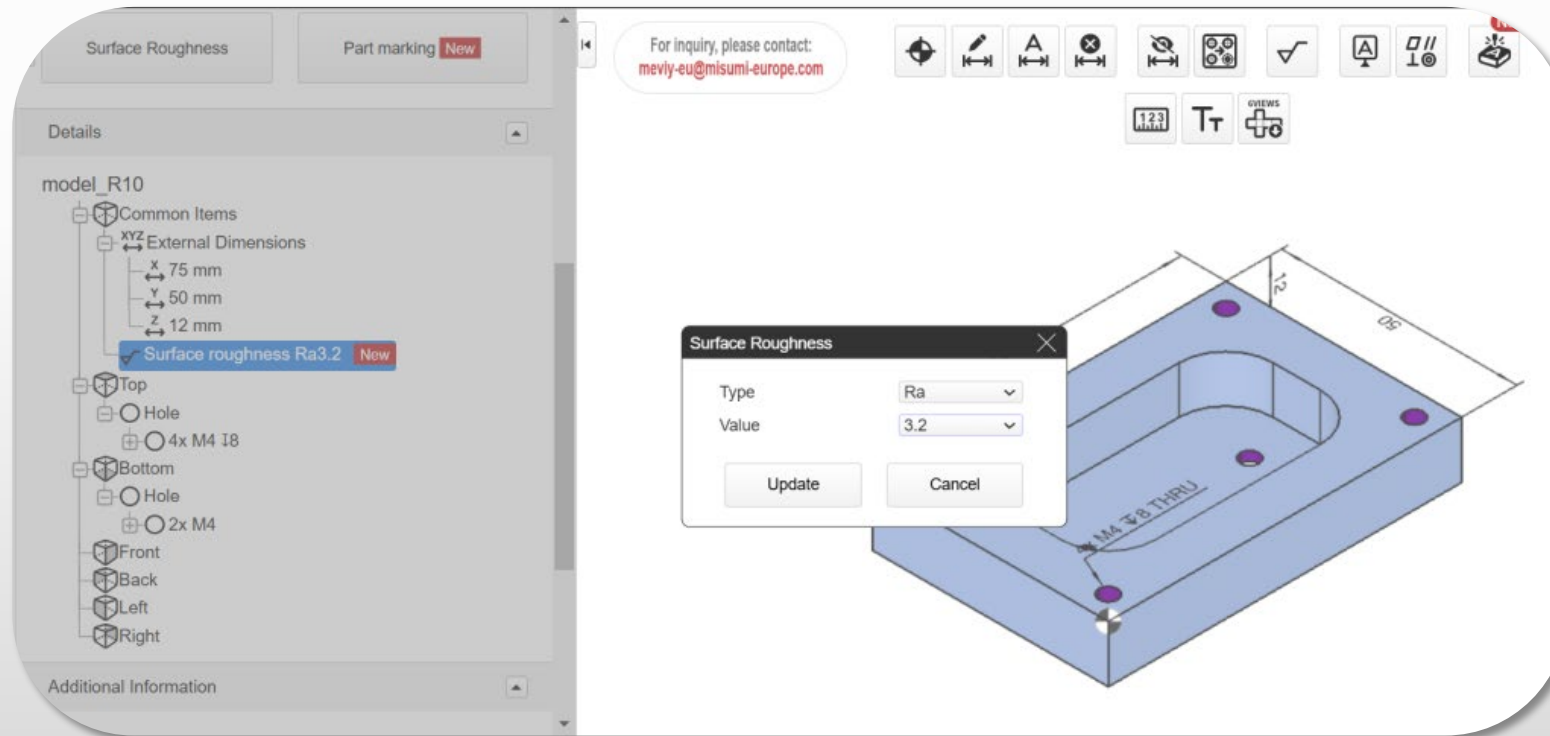
[LEARN MORE](#)

The screenshot displays the configuration interface for CNC-Milling/Turning. The 'Processing method' is set to 'CNC-Milling/Turning'. The 'Product category' is 'Machined Plate'. The 'Material' dropdown is set to 'EN 1.001' with a 'None' tooltip. The 'Surface Treatment' dropdown is set to 'None' with a tooltip showing options: 'None', 'Black Oxide', 'Electroless Nickel', 'Hard Chrome Plating(Flash Plating)', 'Trivalent Chromate(Clear)', 'Trivalent Chromate(Black)', 'LTBC - Surface Treatment' (highlighted with a red box), and 'Phosphating (Manganese)'. The 'Option Setting' section includes 'Add Dimensions' and 'Surface Roughness'. The 'Details' section shows 'CNC-Milling/Turning' and 'Machined Plate'. The 'Material' dropdown is set to 'EN AW - 6061 equiv.' with a tooltip showing options: 'Steel', 'Aluminium', 'Stainless steel(SUS)', 'Resin' (highlighted with a red box), and 'Geometric Tolerance'. The 'Part marking' dropdown is set to 'EN 1.4305 equiv.(annealed)' with a tooltip showing options: 'EN 1.4305 equiv.(annealed)', 'EN 1.4301 equiv.(annealed)', 'EN 1.4301 equiv.(hard)', 'EN 1.4401 equiv.', and 'EN 1.4016 equiv.'.



# CNC Milling: Surface Roughness Ra3.2 & Rz12.5 for Unspecified Areas

We've got you covered when it comes to surface finishes! For unspecified areas, we offer Ra 6.3 & Rz 12.5. Plus, for Steel, Aluminium, Stainless Steel, and Plastic, we now provide an even finer surface roughness of Ra 3.2 & Rz 12.5. That means you can set Ra 3.2 as your default preference in your user settings—giving you more control and precision with ease!

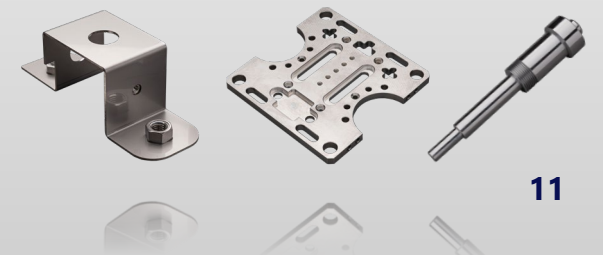


Find out more about this new release and many other exciting topics on our blog!

[LEARN MORE](#)

Appearance in meviy's Application

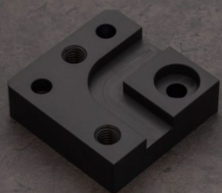
4/14/2025



## CNC Milling: New Plastic Materials Available

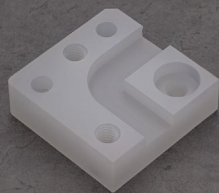
We expanded our offerings with four brand-new plastic materials for milled parts. Now, you have even more options to bring your projects to life with the perfect material choice!

MC Nylon



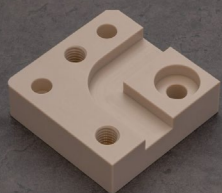
(Conductivity, Black)

Polypropylene (PP)



(Standard, white)

PPS



(Standard, natural color)

PET



(Glass filled, brown)

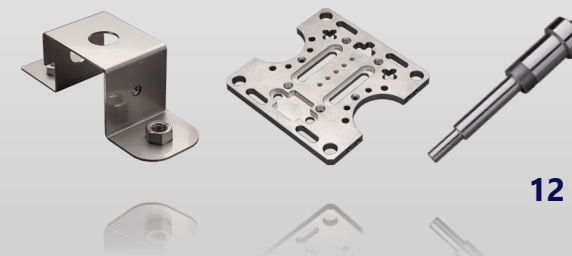
### Specifications:

Material	Density [g/cm <sup>3</sup> ]	Tensile Strength [mPa]	Coefficient of Thermal Expansion [10 <sup>-5</sup> K <sup>-1</sup> ]	Volume Resistivity [Ω · m]
MC Nylon	1.20	69	8.0	1-10 <sup>2</sup>
PP	0.91	34	11.1	10 <sup>13</sup>
PPS	1.63	110 (length) / 65 (width)	4.0 (vertical) / 7.4 (horizontal)	10 <sup>13</sup>
PET	1.35	79	2.4~2.9	10 <sup>16</sup>

Find out more about this new release and many other exciting topics on our blog!

[LEARN MORE](#)

4/14/2025

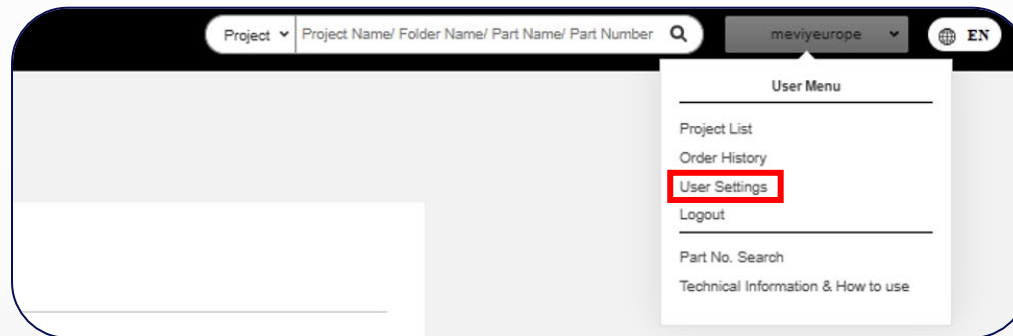


# CNC Milling: Surface Roughness Ra3.2 & Rz12.5 for Unspecified Areas

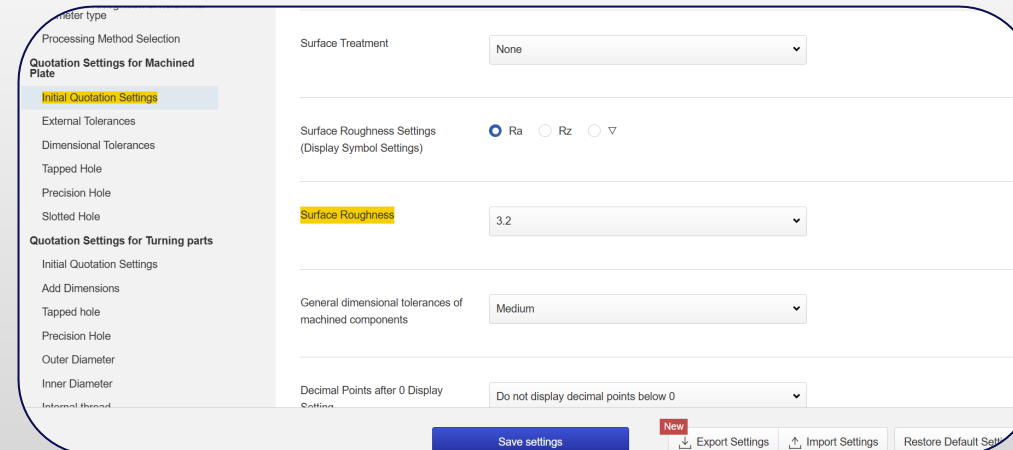
If you're in the project list, click on your name in the top right corner.  
Then, go to **User Settings**.

Under **User Settings** for MP, TP, and SM, you'll find "**Initial Quotation Settings**."  
Here, you can set **Ra 3.2** as your default preference.

1



2



Find out more about this new release and many other exciting topics on our blog!

LEARN MORE



# CNC Milling: Threaded Inserts for Plastic Parts

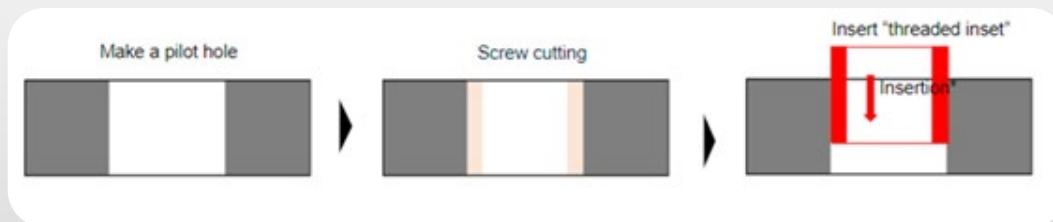
We can now offer high-quality threaded inserts for plastic parts, available in sizes M3 to M8! Perfect for enhanced durability and reliability in your custom plastic parts.



EN 1.4301 equiv.

[LEARN MORE](#)

## Process



## Specifications:

Material	Plate Thickness	Nominal Length	Nominal Diameter				
PET, Acrylic, Polycarbonate, PVC	3.0	-					
	5.0	1D	O	O			
		1.5D	O				
		2D					
	8.0	1D	O	O	O	O	
		1.5D	O	O	O		
		2D	O				
	10.0	1D		O	O	O	O
		1.5D		O	O	O	
		2D		O			





# CNC Milling: Inch Tapped Holes

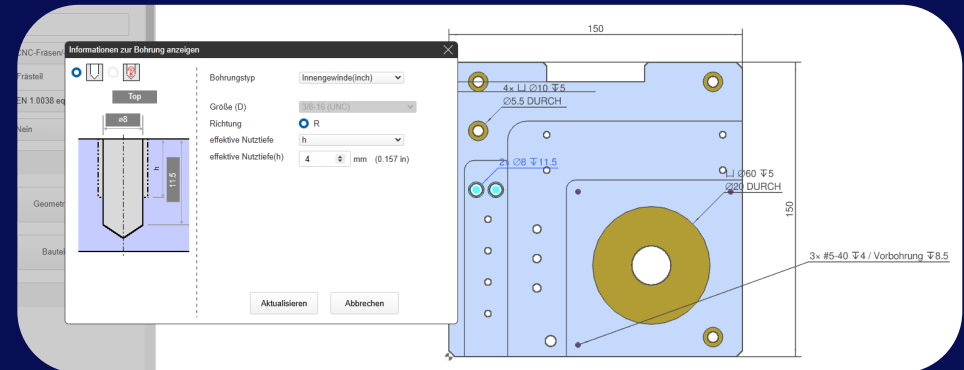
Introducing Inch Tap and Thread for CNC Milling and Turning – offering engineers expanded design possibilities. With a range of Inch thread sizes now available, manufacturing components with Inch screws and threads has never been easier.

Tapping for CNC milling and Turning: **Available in sizes from #2 to 5/8"**

Find out more about this new release and many other exciting topics on our blog!

[LEARN MORE](#)

## How To Set Tapped Holes



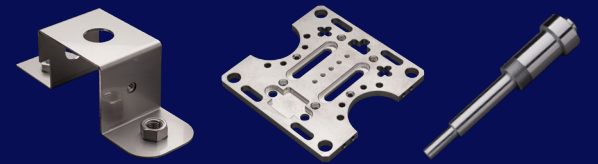
1. Set display style in drop down at upper right of screen to unit (inch)
2. Double click hole in the model viewer
3. Change the hole type to tapped (inch)
4. Choose the inch size and pitch required
5. Set the thread depth in mm; inch depth will be shown for reference





# ■ CNC Turning

---












# CNC Turning: TP GD&T Geometric Dimensioning & Tolerancing

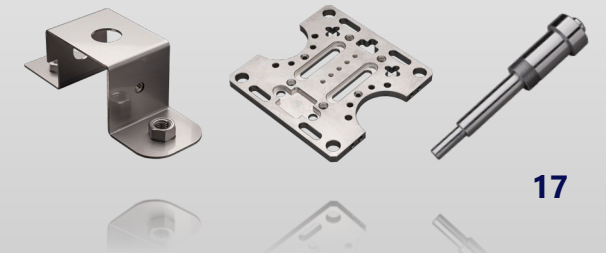
## Common types of geometric tolerances include:

- **Flatness:** Ensures a surface is even and free from waviness.
- **Cylindricity:** Controls the roundness and straightness of cylindrical parts.
- **Concentricity:** Ensures that the centre axis of one feature aligns with another.
- **Parallelism:** Verifies that surfaces or axes are parallel within a specified range.

By incorporating geometric tolerances into your designs, you can achieve higher precision, reduce assembly issues, and improve overall product quality.

[HOW TO SET](#)[LEARN MORE](#)

Geometric Tolerance Type	Symbol	Plane
Flatness		○
Parallelism		○
Perpendicularity		○
Circularity		—
Concentricity		—
Straightness		—
Cylindricity		—
Circumferential Runout		—
Full Swing		—

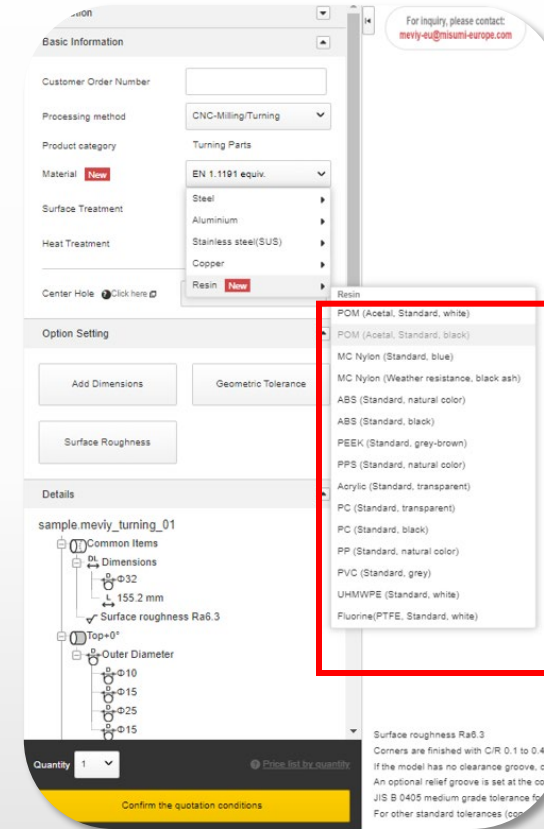


# CNC Turning: Plastic Materials Added

meviy now offers a wide range of plastic materials for turned parts! This expansion provides more flexibility to meet your specific requirements, opening up new possibilities for your projects.

## New Plastic Materials

- POM (Acetal, Standard, white)
- POM (Acetal, Standard, black)
- MC Nylon (Standard, blue)
- MC Nylon (Weather resistance, black ash)
- ABS (Standard, black)
- ABS (Standard, natural color)
- PC (Standard, transparent)
- PC (Standard, black)
- PP (Standard, natural color)
- Fluorine (PTFE, Standard, white)
- PEEK (Standard, grey-brown)
- PPS (Standard, natural color)
- Acrylic (Standard, transparent)
- UHMWPE (Standard, white)
- PVC (Standard, grey)



Find out more about plastic materials for turned parts and other exciting topics in our blog!

[TO THE BLOG](#)

4/14/2025



 **MiSUMi** | Your Time, Our Priority



# CNC Turning: New Heat Treatment Options Added

We now offer a variety of heat treatment options for our turning parts, providing greater flexibility to meet your specific needs.

Conventional Hardening



Vacuum Hardening



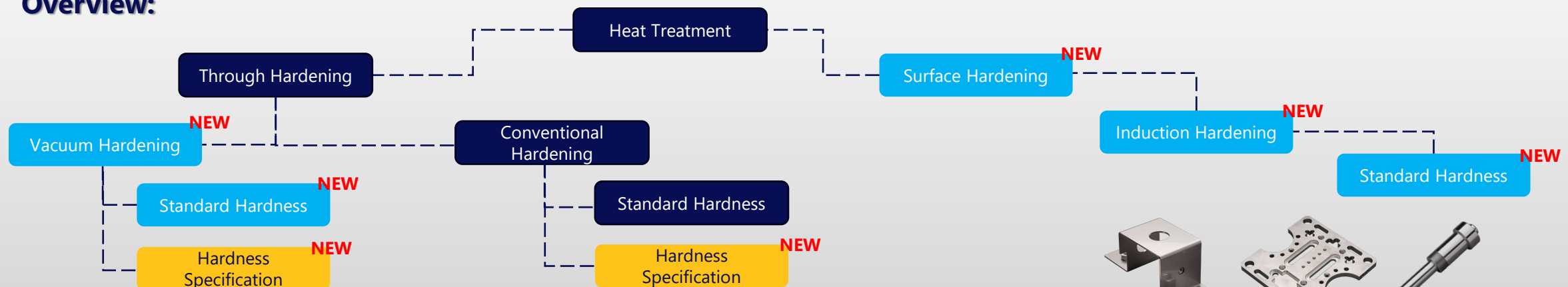
Induction Hardening



Find out how to select different heat treatment options in our meviy application!

[LEARN MORE](#)

## Overview:



# CNC Turning: New Heat Treatment Options Added

## Through Hardening (Conventional Hardening)

Quenching in a general  
atmospheric kiln



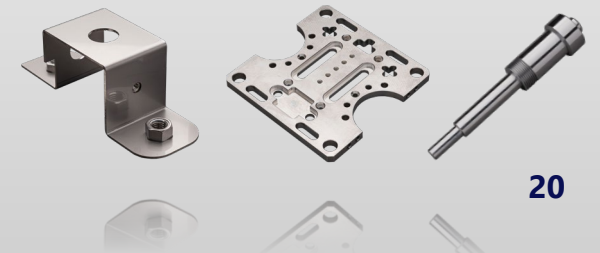
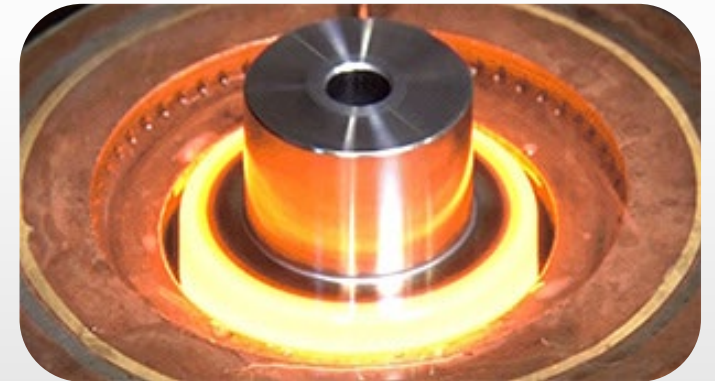
## Vacuum Hardening

Quenching using a vacuum kiln



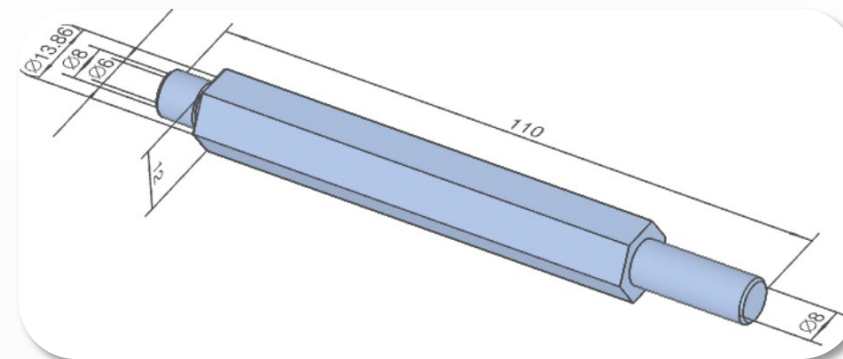
## Surface Hardening (Induction Hardening)

Partial and surface  
quenching



## CNC Turning: Custom Hexagon Bars

We're excited to introduce Custom Hexagon Bars to our turned parts lineup! Designed for greater precision and versatility, they offer enhanced customization and efficiency for your manufacturing needs.



Find out more about hexagon bars and other exciting topics in our blog!

[LEARN MORE](#)

Material		Basic Information
Steel	EN 1.1191 equiv. EN 1.0038 equiv. EN 1.7220 equiv.	Surface treatment possible Heat treatment possible No tolerances can be selected No surface roughness can be selected No geometric tolerances can be selected
Stainless Steel	EN 1.4305 equiv. EN 1.4301 equiv. EN 1.4401 equiv.	
Copper	CW614N equiv.	





# CNC Turning: Hexagon Holes Added

Our CNC turning service now includes automated quoting for hexagonal holes. Perfect for tight spaces where traditional tools can't reach, hexagonal holes offer a simpler solution for fastening in complex machinery and precision instruments.

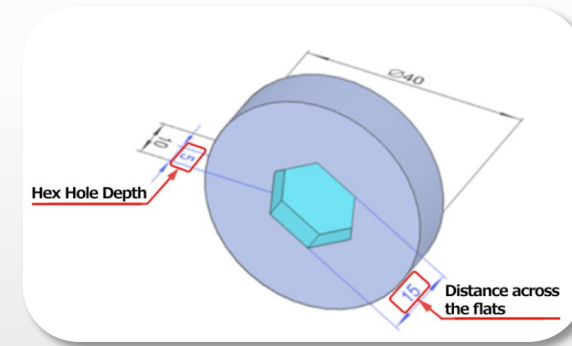
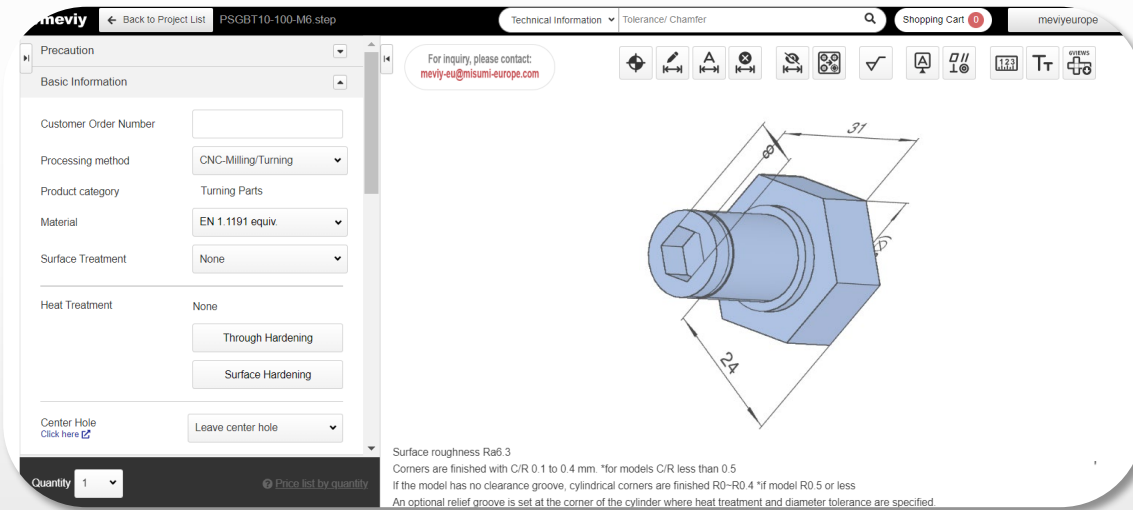
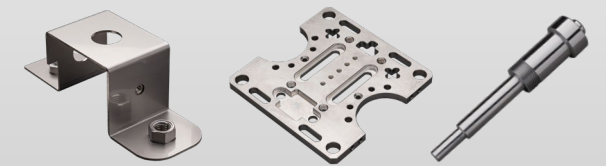


Fig. Appearance of Hexagon Holes in meviy's 3D Viewer

Find out more about this new release and many other exciting topics on our blog!

[LEARN MORE](#)

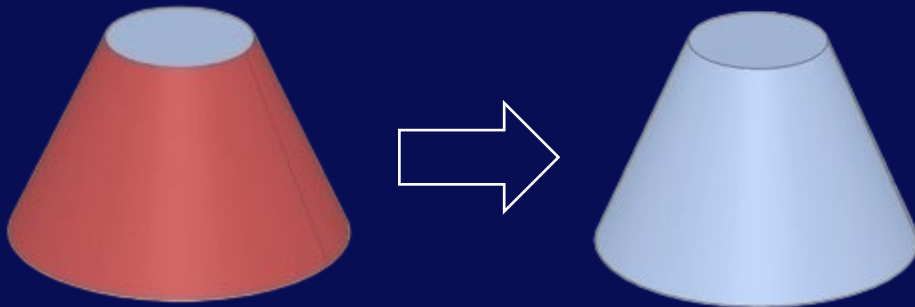




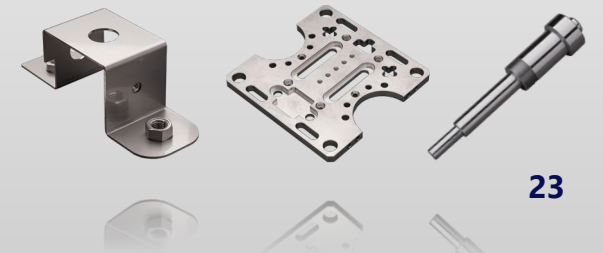
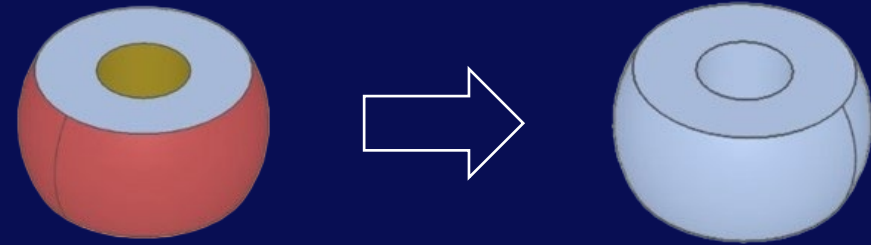
## CNC Turning: Recognition of Crown and Taper Shapes Added

Our system now recognizes crown and taper shapes for turning parts, expanding beyond cylindrical designs. Surface treatment, roughness, and material options are available, with a max outer diameter of 200mm.

### Taper Shape



### Crown Shape



## CNC Turning: Plastic Washers

Great news! We're now able to process applications like **washers** starting **from just 1mm in length**. Previously, we could only handle lengths above 2mm, but now 1mm and up are good to go for AQ.

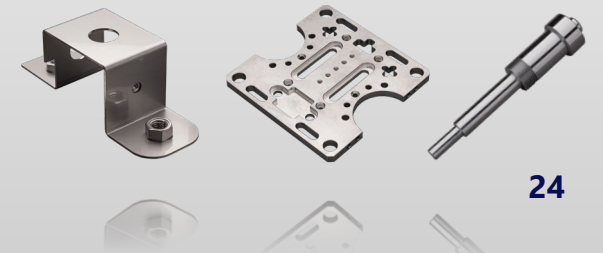


### **Available Materials:**

Plastic for turned parts (excluding PMMA and PVC)

### **Size Range:**

ø3 to 200mm, with lengths from 1mm to 20mm



# CNC Turning: Inch Threads

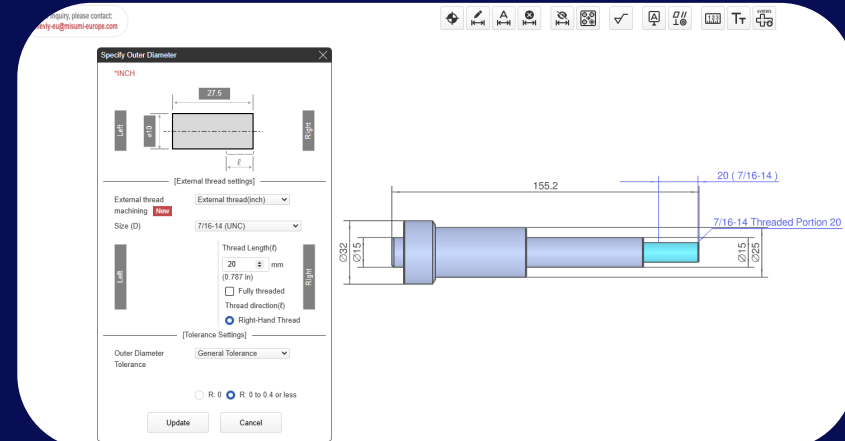
Introducing Inch Tap and Thread for CNC Milling and Turning – offering engineers expanded design possibilities. With a range of Inch thread sizes now available, manufacturing components with Inch screws and threads has never been easier.

External and Internal Threads for CNC Turning: **Available in sizes from #2 to 1"**

Find out more about this new release and many other exciting topics on our blog!

[LEARN MORE](#)

## How To Set Inch Threads

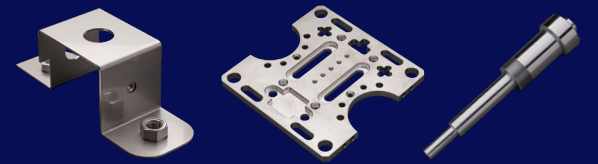


1. Set display style in drop down at upper right of screen to unit (inch)
2. Double click the diameter in the model viewer
3. Change the type to male or female thread (inch)
4. Choose the inch size and pitch required
5. Set the thread depth in mm; inch depth will be shown for reference



# ■ Sheet Metal

---

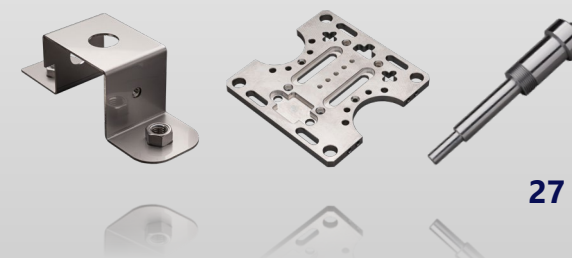
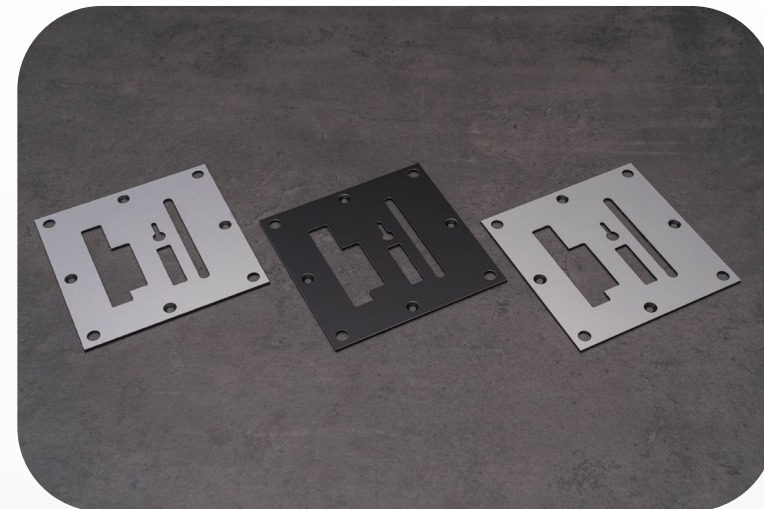


## Sheet Metal: Aluminium Composite Plate Available

We've added the "Aluminum Composite Plate" as a new material option for sheet metal parts. It's ideal for reducing weight while maintaining rigidity or for creating equipment covers.

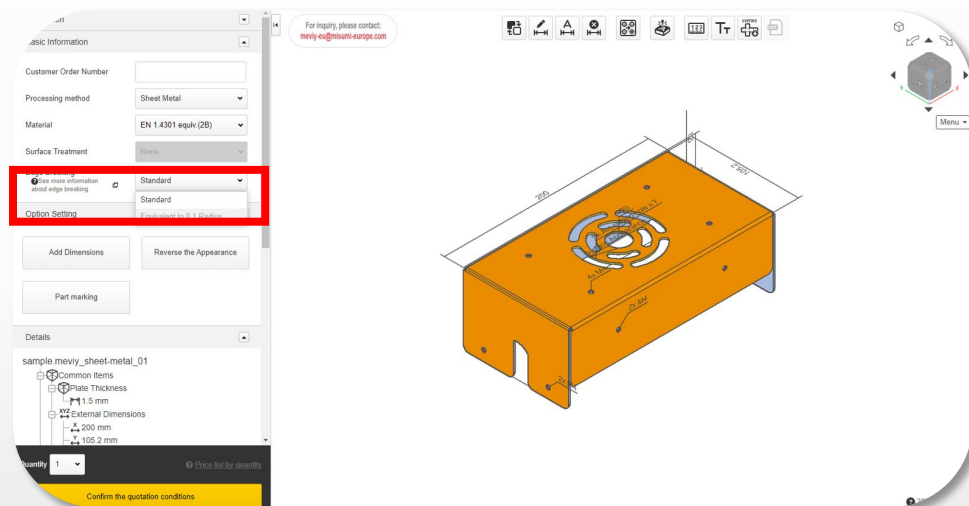
If you select "composite board" in the material selection, you can choose from the options which are shown in the table below ↓

Material	Core Material	Surface Treatment	Colour	Plate Thickness	External Dimensions	
					Vertical	Horizontal
Aluminium Composite Plate	Polyethylene Foam Plastic	Paint	Silver	3.0	10 to 1000	10 to 2000
			Black			



# Sheet Metal: Additional Edge Breaking Options

meviy now offers an additional chamfering/deburring option for sheet metal parts. While our process already ensures burrs of 0.1mm or less, this new feature allows you to select an equivalent radius of 0.1mm or less for even smoother edges.



The price varies based on size.  
E.g., for a length of 10mm < X < 300mm → S → Approx. €3.

Material	Surface Treatment	Sheet Thickness (mm)
EN 1.0330 equiv. [EN 1.0320 equiv. (hot coiled)]  EN 1.0038 equiv.	-	0.8 1.0 1.2 1.6 2.0 2.3 3.2 4.5 6.0 9.0 10.0 12.0 16.0
	Paint	0.8 1.0 1.2 1.6 2.0 2.3 3.2 4.5 6.0
	Electroless Nickel Plating	0.8 1.0 1.2 1.6 2.0 2.3 3.2 4.5 6.0 9.0
	Black Oxide	
	Trivalent Chromate (Clear)	
EN 1.0330 equiv.	Trivalent Chromate (Black)	0.8 1.0 1.2 1.6 2.0 2.3 3.2
	Electrolytic Zinc Plating	0.8 1.0 1.2 1.6 2.0 2.3 3.2
EN 1.4301 equiv.	2B	0.8 1.0 1.2 1.5 2.0 2.5 3.0 4.0 5.0 6.0
	No. 1	9.0 10.0 12.0
EN 1.4106 equiv.	2B	0.8 1.0 1.2 15 2.0 3.0

For more information, visit  
our blog!

[TO THE BLOG](#)

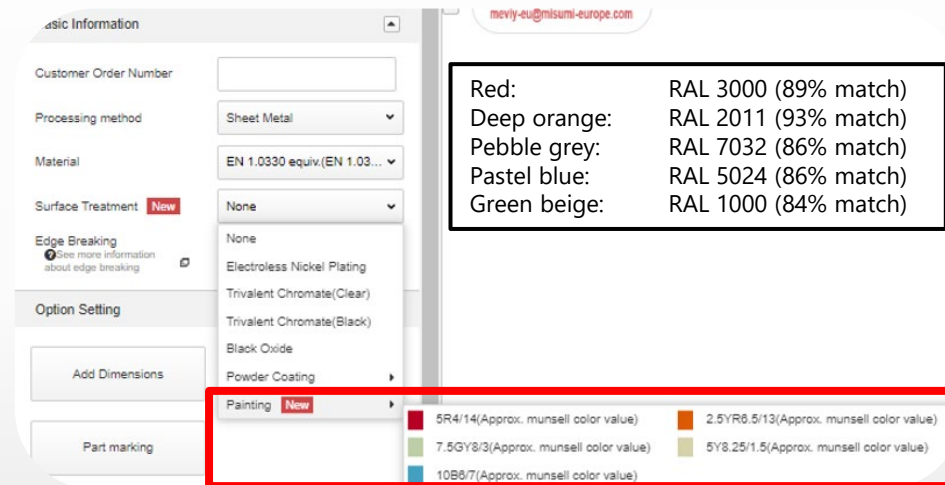


## Sheet Metal: 5 New Wet Paints Available

Since the September release, we now offer 5 new paint colours for our sheet metal parts. These colours are available in the surface treatment section, alongside our wide range of powder coating options.



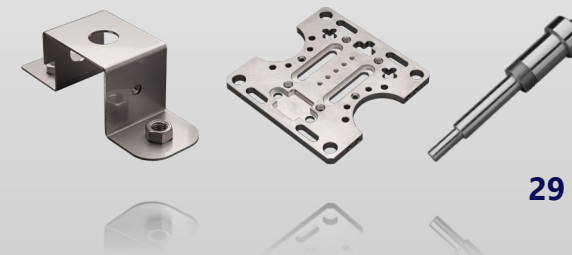
Sheet Metal Parts Showing 5 New Wet Paints



Screenshot of the meviy Application Showing Colour Options

Find out more about meviy's new available colours and other exciting topics in our blog!

[LEARN MORE](#)



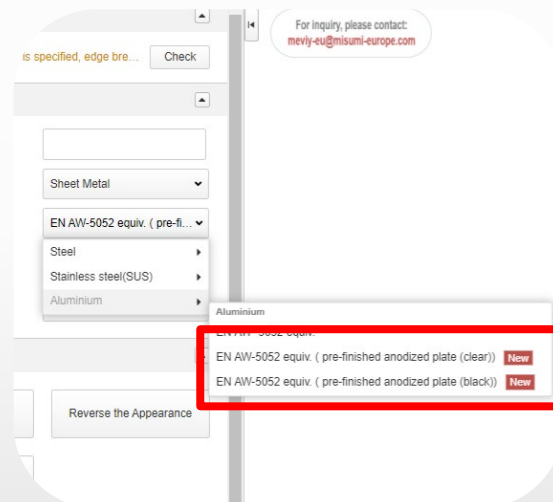


## Sheet Metal: Pre-Anodised Plates Available

We're excited to expand our capabilities and now offer anodising for sheet metal parts. This brings the same protection, durability, and aesthetic customization previously available for sheet metal components, ideal for enclosures, panels, and housings.



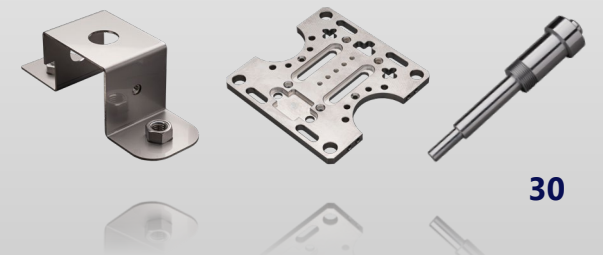
Pre-Anodised Sheet Metal Parts Manufactured by meviy



Appearance in the meviy Application

Find out more about meviy's new options for anodising and other exciting topics in our blog!

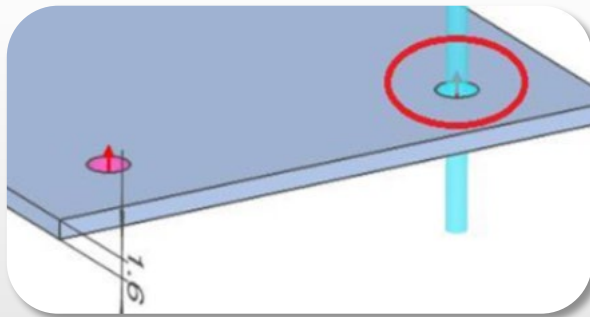
[LEARN MORE](#)



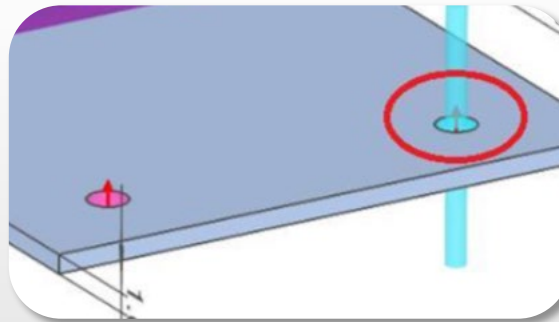
# Sheet Metal: Tap and Countersunk Visibility Improvement

We're excited to announce an enhancement to the **direction display** when **selecting taps** and **countersinks**. This update significantly improves visibility, making it easier for users to make precise machining decisions and ensuring greater accuracy in every operation.

AS IS







TO BE



## Sheet Metal : Long Time Delivery Option

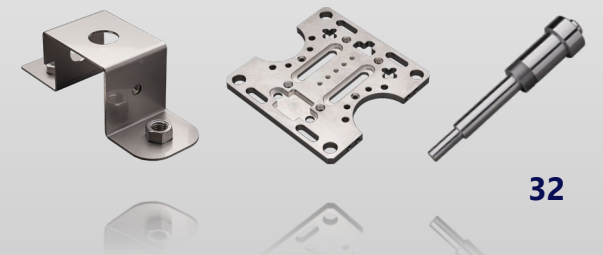
### Economy Shipping Option Added for 4 Colours for Sheet Metal Parts

<b>Black</b>	 N-10 (JPMA Color code) Reference value: 9005 (RAL 95% match) N1 (Munsell) CYMK 21 12 0 91	<b>Grey</b>	 25-70B (JPMA Color code) Reference value: 7032 (RAL 97% match) 5Y7/1 (Munsell) CYMK 0 5 12 30
<b>White</b>	 N-95 (JPMA Color code) Reference value: 9016 (RAL 97% match) N9.5 (Munsell) CYMK 0 1 2 4 Glossy	<b>Yellow</b>	 22-80X (JPMA Color code) Reference value: 1021 (RAL 94% match) 2.5Y8/14 (Munsell) CYMK 0 32 100 1 Glossy

We are excited to announce the inclusion of four colours (**Black, White, Grey, Yellow**) in our economy shipping service for powder coated sheet metal processing. By opting for more relaxed lead time, you can enjoy a **20% discount** without any compromise on quality.

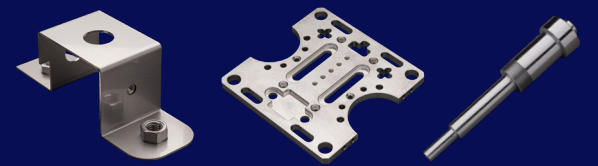
Find out more about meviy's new options for economy shipping and other exciting topics in our blog!

[LEARN MORE](#)



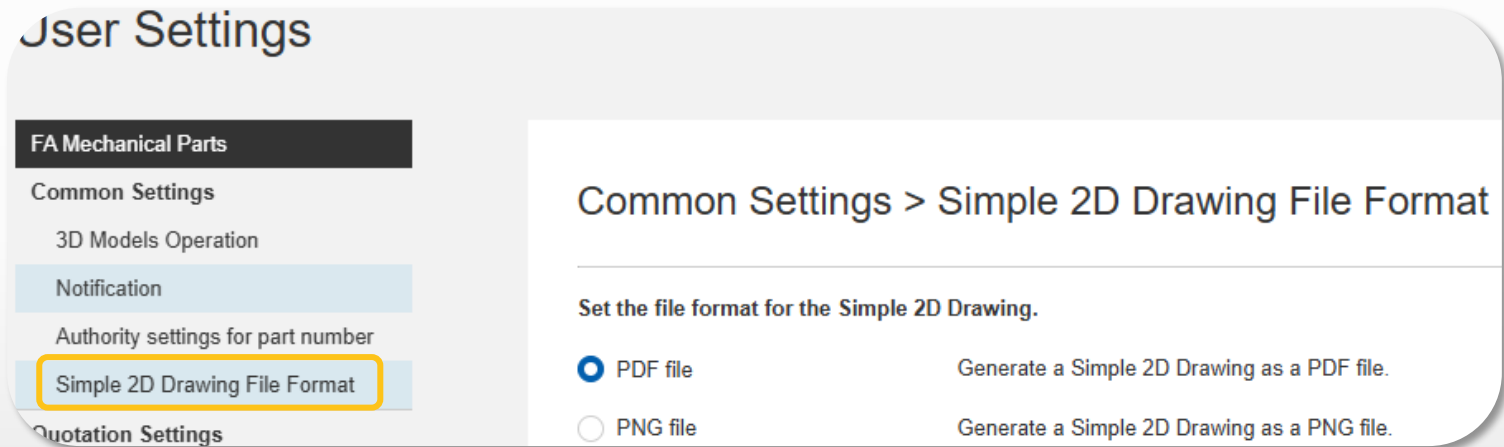
# ■ System

---



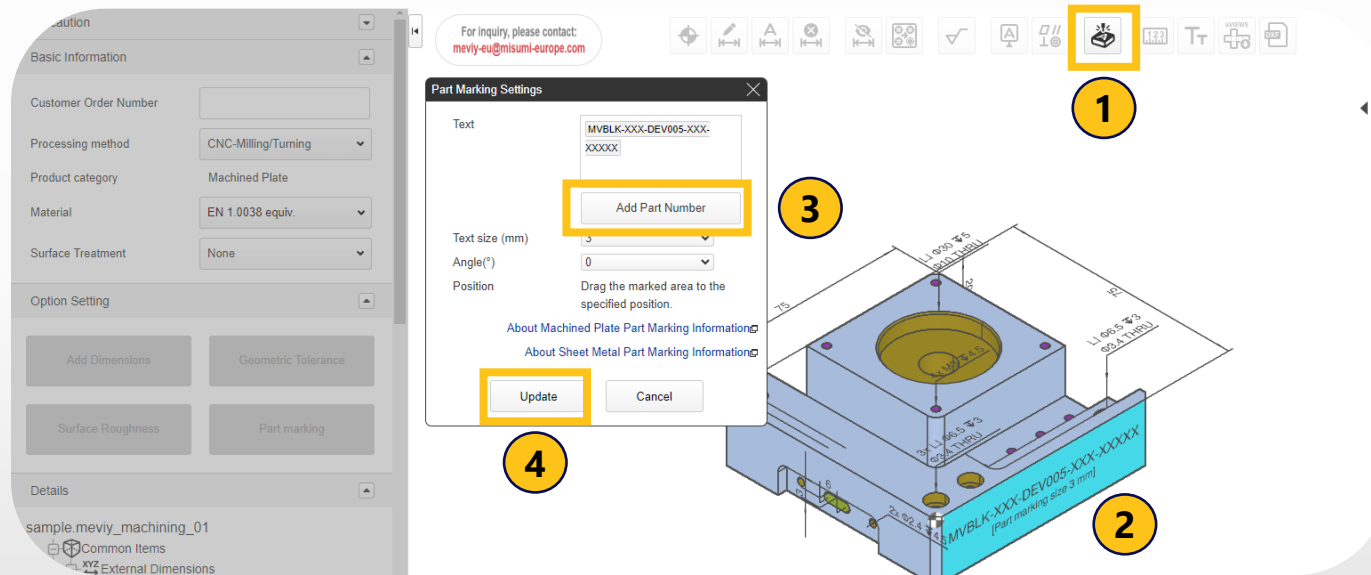
## System: Download 2D PDF Drawing

It is now possible to download a simple 2D drawing in PDF format.  
You can select between PNG and PDF format in the user settings.



# System: Part Number Engraving Release

Easily streamline part management with our new part number engraving feature for **CNC milled** and **sheet metal parts**. Improve identification, reduce errors, and enhance efficiency in manufacturing, assembly, and maintenance — all seamlessly integrated into our platform.



- 1 Click on the marked icon at the top.
- 2 Select the surface which should be marked.
- 3 Insert the text and click on **Add Part Number**.
- 4 When everything is ready, click **Update**.

For more information, visit  
our blog!

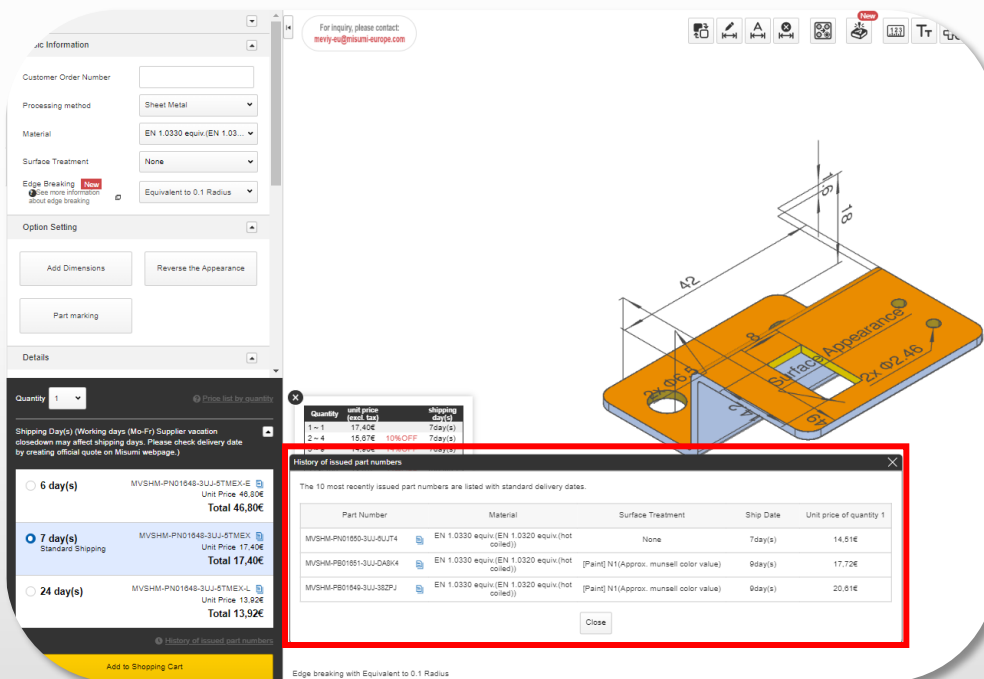
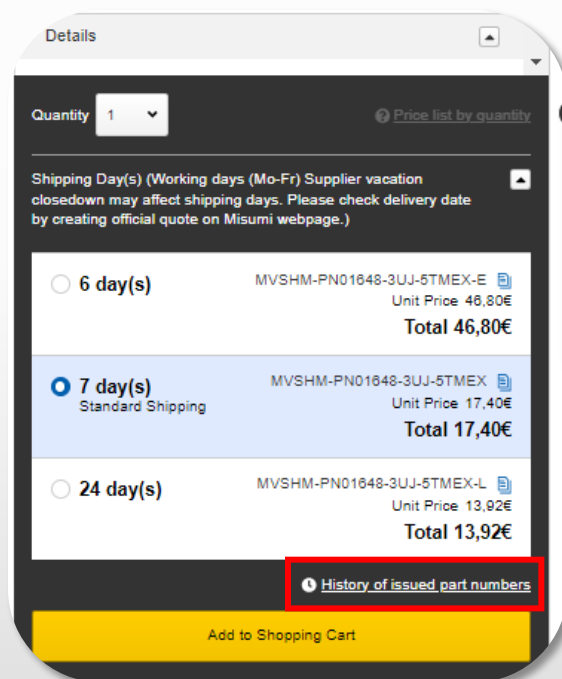
[TO THE BLOG](#)

4/14/2025



# System: Part Number History Function Added

We now offer a part number history for sheet metal, machined plate, and turning parts. Easily compare costs for different materials and surface treatments, with past prices and shipping dates displayed in the 3D Viewer. View key details like part number, material, surface treatment, shipping days, and unit price for quick reference.



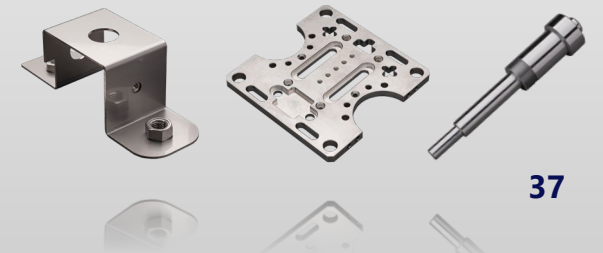


## System: New Supported CAD File Formats

With our new update, we have added several new CAD file formats to our system. This makes our application even more flexible. You can find the new formats below:

### New Supported CAD File Formats:

SolidWorks – 2024  
Inventor – 2024  
Creo – Creo 10.0  
NX – NX2306  
Solid Edge – 2024  
CATIA V5 – V5\_6R2023



[meviy.misumi-ec.com/en\\_gb-gb/](https://meviy.misumi-ec.com/en_gb-gb/)

